

67350 AND 67350-1 CYCLE COUNTER KITS FOR DIAPHRAGM PUMPS

GENERAL DESCRIPTION

67350 kits include parts to adapt the Cycle Counter to the following ARO diaphragm pump models.

1"	1-1/2"	2"
PD10X-X	PD15X-X	PD20P-X
PE10X-X	PE15X-X	PE20P-X
PM10X-X-A02	PM15X-X-A02	
PW10X-X		

67350 INSTALLATION

NOTE: Refer to the pump Operator's Manual.

PEXXX-X models:

1. Remove (Y17-50-S) pipe plug from the boss on the top of the valve

block. Continue with step 2, below.

PDXXX-X, PMXXX-X and PWXXX-X models:

1. a. Remove all valve components from the valve block (refer to pump Operator's Manual for disassembly procedure).
1. b. Drill and tap a 1/8 - 27 N.P.T. hole, centered on the boss on the top of the valve block. Thoroughly clean the valve block, as shavings from drilling / tapping may cause damage to valve components during pump operation.
1. c. Reassemble valve components to the valve block (refer to pump Operator's Manual for reassembly procedure).
2. Assemble (59756-4) elbow to threaded hole in top of valve block.
3. Remove two flange nuts from the fluid cap. Use the flange nuts to attach the (96284) bracket to the fluid cap (see figure 1).
4. Assemble the (59801) counter to the bracket, using the screws, lockwashers and nuts provided.
5. Assemble the signal tubing to the counter input (marked "Z" on back of counter) and to (59756-4) elbow (cut tubing as necessary).

67350 TYPICAL INSTALLATION

● Included with 59801 counter.

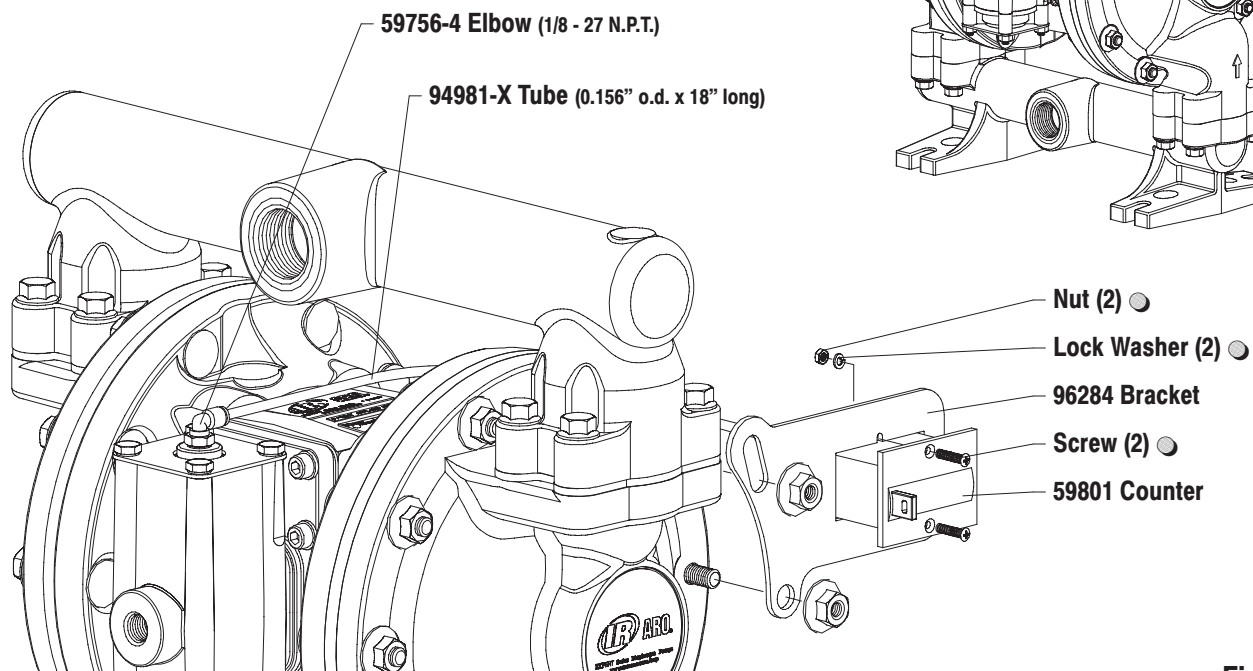


Figure 1

GENERAL DESCRIPTION

67350-1 kits include parts to adapt the Cycle Counter to the following ARO diaphragm pump models.

2"	3"
PD20R-X	PD30R-X-B
PD20Y-X	PM30R-X-X-B02
PF20R-X	
PF20Y-X	
PM20R-X-X-A02	

67350-1 INSTALLATION

NOTE: Refer to the pump Operator's Manual.

1. Remove all valve components from the valve block (refer to pump Operator's Manual for disassembly procedure).
2. Drill and tap a 1/8 - 27 N.P.T. hole, centered on the boss on the top of the valve block. Thoroughly clean the valve block, as shavings from drilling / tapping may cause damage to valve components during pump operation.
3. Reassemble valve components to the valve block (refer to pump Operator's Manual for reassembly procedure).
4. Assemble (59474-4) connector to threaded hole in top of valve block.
5. Remove one screw from the top manifold. Use the screw to attach the (96262) bracket to the manifold (see figure 1).
6. Assemble the (59801) counter to the bracket, using the screw, lock-washer and nut provided.
7. Assemble the signal tubing to the counter input (marked "Z" on back of counter) and to (59474-4) connector (cut tubing as necessary).

67350-1 TYPICAL INSTALLATION

● Included with 59801 counter.

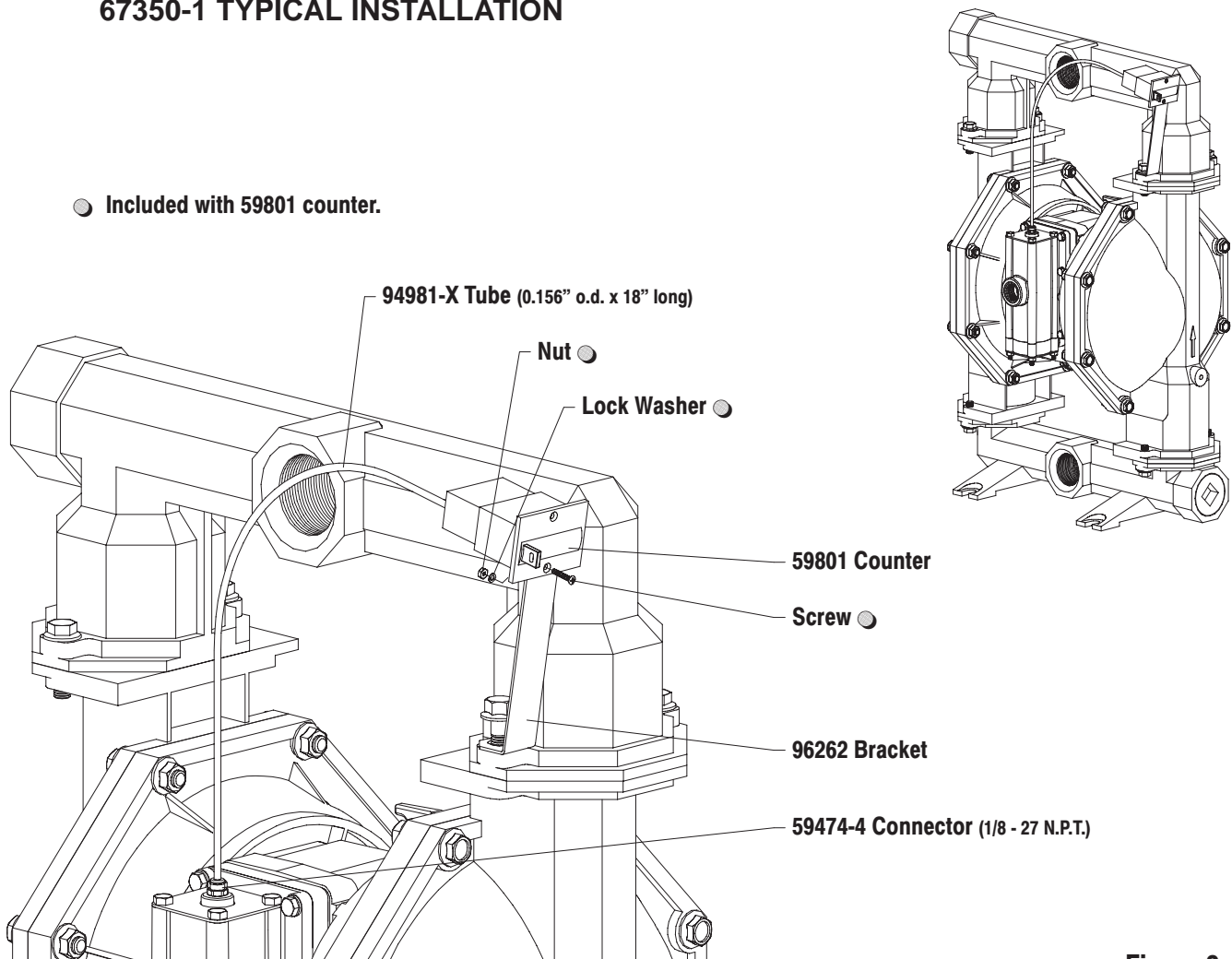


Figure 2